

# Q-LINK REMOTE LIBRARY MANAGER

WEB BASED REMOTE  
MONITORING AND  
MANAGEMENT  
OPTION FOR  
YOUR LIBRARIES



Q-Link is a new remote tape library monitoring and management system. Q-Link provides Information Systems Managers, Network Administrators and Service/Support Engineers with the key information they need to cost effectively monitor and manage their tape library systems from anywhere in the world.

Q-Link utilizes an easy-to-use graphical interface accessed over a web browser, and supports up to ten individual user accounts.

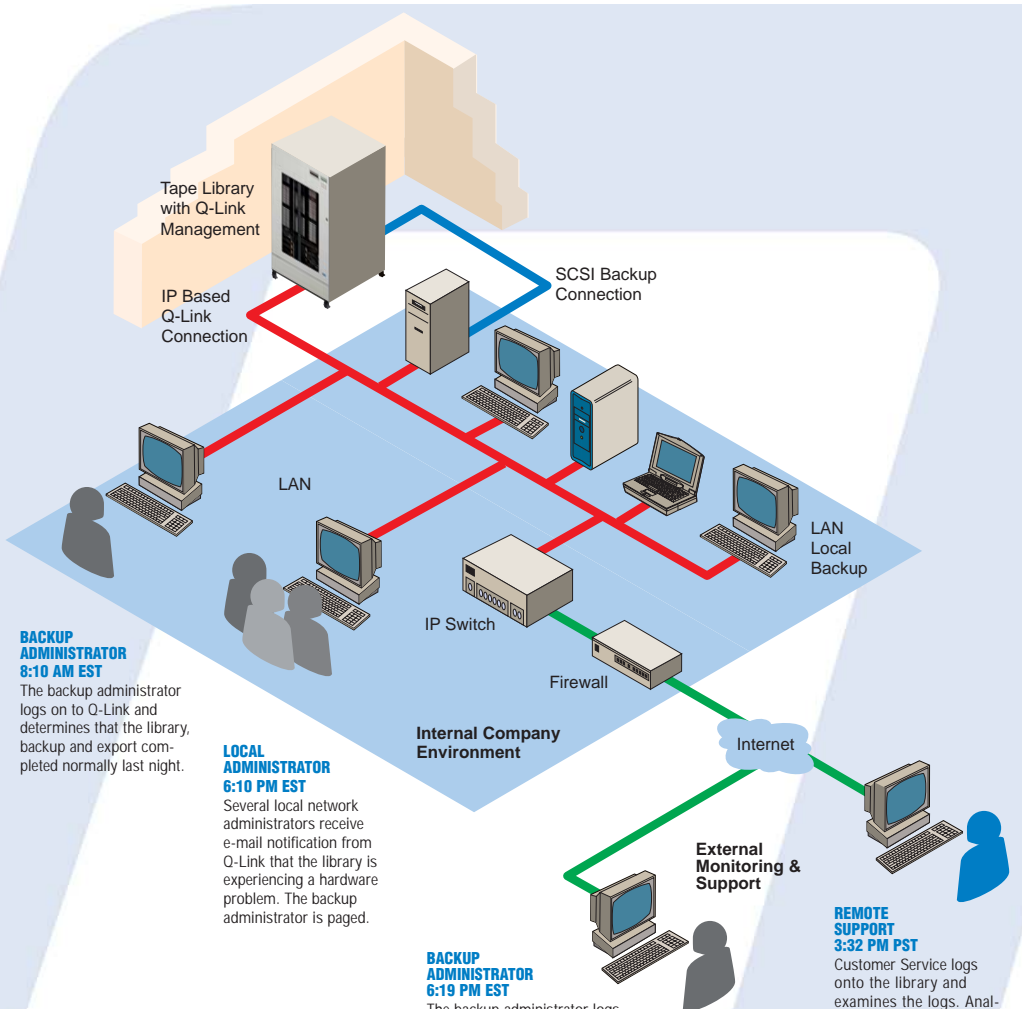
### FLEXIBLE SYSTEM

Each account can have an individual password, access permissions, and custom notification settings. This allows the creation of "monitor only" users and "monitor and configure" users. Q-Link provides remote monitoring of library activity by tracking changes in the data cartridge inventory and accumulated tape movement. System health is continually monitored and abnormal conditions are automatically alerted via e-mail notification. Several users may be notified of the same event (set by the Q-Link administrator) or individual conditions may be directed to specific users.

### POWERFUL FEATURES

Q-Link supports total remote operation of the library. Any function that can be executed locally from the operator control panel can be performed over the worldwide web via Q-Link.

Each Q-Link equipped library supports custom naming and contact information tied to the individual unit, eliminating confusion in multi-library environments.



**BACKUP ADMINISTRATOR 8:10 AM EST**  
The backup administrator logs on to Q-Link and determines that the library, backup and export completed normally last night.

**LOCAL ADMINISTRATOR 6:10 PM EST**  
Several local network administrators receive e-mail notification from Q-Link that the library is experiencing a hardware problem. The backup administrator is paged.

**BACKUP ADMINISTRATOR 6:19 PM EST**  
The backup administrator logs onto his network from home and determines that there appears to be a legitimate library problem. He contacts technical support and opens a secure network connection into his network for Customer Service.

**External Monitoring & Support**

**REMOTE SUPPORT 3:32 PM PST**  
Customer Service logs onto the library and examines the logs. Analysis reveals that an optical sensor has failed – On-site service is dispatched.



### BROAD APPLICATION

Q-Link is available as an option on all TIS and RLS tape library systems and may be retrofitted to most libraries already in the field.

Installation and set up is quick and easy: simply install the Q-Link hardware and configure users and access using popular browsers.

### SIMPLY RELIABLE

Installation and support are provided by leading VARs and Integrators. *Simply Reliable* Tape Libraries are the preferred choice of IT professionals worldwide.

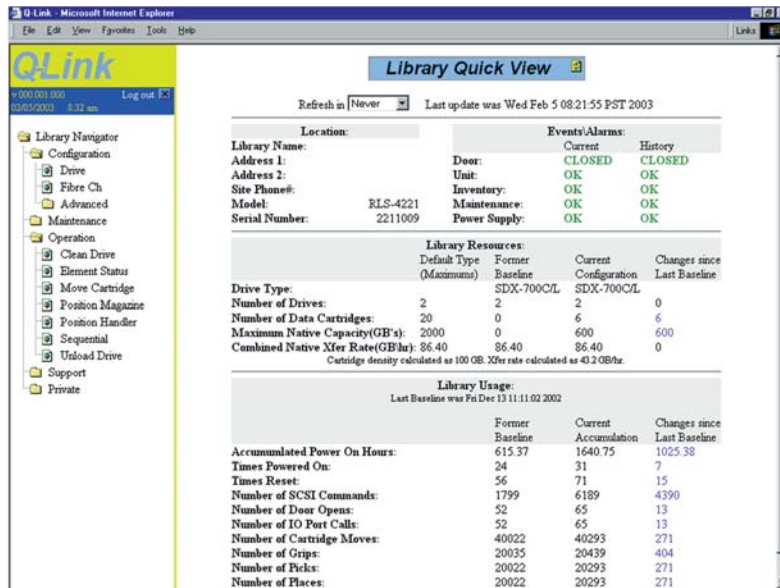
### INVALUABLE SUPPORT TOOL

Service personnel can log in remotely to check the status of the library, recover detailed system logs, upgrade library control firmware, eject and move cartridges, perform tape drive head cleanings, change SCSI address IDs, change library operational parameters and even recalibrate the unit if required.

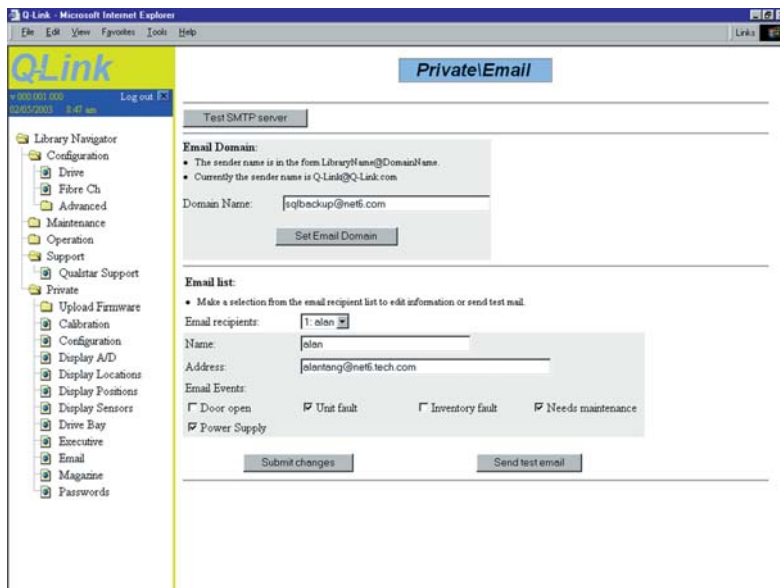
# SIMPLY RELIABLE

# Q-LINK REMOTE LIBRARY MANAGER

WEB BASED REMOTE MONITORING  
AND MANAGEMENT OPTION FOR  
YOUR LIBRARIES



With Q-Link, viewing parameters, checking status, changing configuration settings, and reviewing any function of any Tape Library is as easy as the click of a box.



Administrators can easily set up e-mail addresses to be automatically alerted of unexpected conditions.

For more information contact:  
**Unylogix Technologies Inc.**  
Tel: (514) 253-5200  
E-mail: [get-info@unylogix.com](mailto:get-info@unylogix.com)  
Web: [www.unylogix.com](http://www.unylogix.com)

Q-Link is a web thin server which integrates directly within any RLS or TLS library and hosts the Q-Link application.

## Q-LINK FEATURES

- Provides complete overview of library status and accumulated operations
- Delivers detailed system logs over the web
- Alerts can notify multiple user accounts
- Firmware upgrades can be performed remotely
- Conformance to backup policy can be verified

## LIBRARY COMPATIBILITY

- All TLS Series models
- All RLS Series models

## Q-LINK INTEGRATION

- Integrates directly with TLS Series library controllers
- Part of IPM on RLS Series libraries
- Initial IP configuration through library control panel
- Main Q-Link setup through web interface

## MENU LEVELS

- Quick View
- Configuration
- Operation
- Maintenance
- Private

## FAULT ALARMS

- Door Open
- Unit Fault
- Inventory Fault
- Maintenance

## SPECIFICATIONS

### Ethernet Connection:

RJ45 connector, 10BaseT

### Web Browser Compatibility:

Internet Explorer 6 or Netscape 6.2

### Browser Requirements:

Java VM enabled, Javascript enabled, Cookies enabled

### E-mail requirements:

(for remote alerts)  
SMTP server and Name server specified

### Number of User Accounts:

Ten, each custom configurable

### Hardware Compatibility:

TLS: Executive III and higher  
All RLS Series

### Firmware

Compatibility:  
TLS: Rev. 2.17 or higher  
All RLS Series

**SIMPLY RELIABLE**